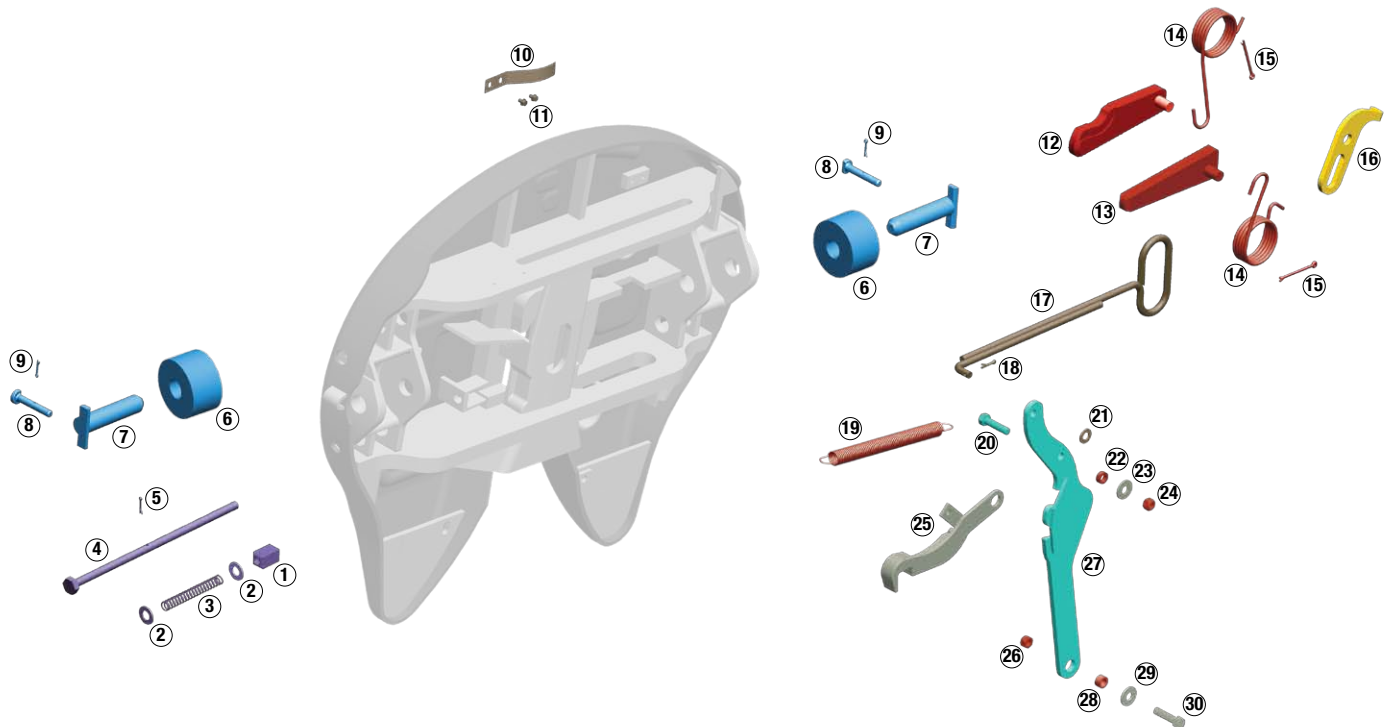


H5092/X5092 series No-Slack® top plate kits



Rebuild kit (KIT-RPR-5092L or R)

Item	Description	Quantity
12	Step jaw	1
13	Wedge	1
14	Jaw and wedge spring	2
15	Cotter pin, 1/4" x 3"	2
19	Bumper spring	1
22	Bushing, 5/16"	1
28	Bushing, 7/16"	1
24	Hex lock nut, 1/2" - 13	1
26	Hex lock nut, 1/2" - 13	1

Wedge-stop rod kit (KIT-ROD-1108)

Item	Description	Quantity
1	Wedge-stop rod nut	1
2	Flat washer, 5/8" I.D.	2
3	Wedge-stop rod spring	1
4	Wedge-stop rod	1
5	Cotter pin, 3/16" x 1"	1

Bracket pin kit (KIT-PIN-191)

Item	Description	Quantity
6	1-piece bushing	2
7	Bracket pin	2
8	Bracket retainer pin	2
9	Cotter pin	2

Note: For Xtra® heavy duty models choose KIT-PIN-XHD

Pull handle kit (KIT-PUL-5092)

Item	Description	Quantity
10	Leaf spring	1
11	Self tapping screw	1
17	Pull handle	1
18	Cotter pin, 3/16" x 1"	1
21	Flat washer, 1/2" I.D.	1

Timer kit (KIT-TMR-134L or R)

Item	Description	Quantity
16	Timer	1
22	Bushing 5/16"	1
24	Hex lock nut, 1/2" - 13	1
28	Bushing 7/16"	1
26	Hex lock nut, 1/2" - 13	1

Bumper kit (KIT-BPR-131L or R)

Item	Description	Quantity
25	Bumper	1
19	Bumper spring	2
22	Bushing 5/16"	1
24	Hex lock nut, 1/2" - 13	1
30	Hex head bolt, 1/2" - 13	1
29	Flat washer, 1/2" I.D.	1
28	Bushing 7/16"	1
26	Hex lock nut, 1/2" - 13	1

Note: For Xtra® heavy duty models choose KIT-BPR-131L or R

Operating handle kit (KIT-OPR-5000-SL OR SR)

Item	Description	Quantity
27	Operating handle	1
20	Hex head bolt, 1/2" - 13	1
22	Bushing 5/16"	1
23	Flat washer, 1/2" I.D.	1
24	Hex lock nut, 1/2" - 13	1
30	Hex head bolt, 1/2" - 13	1
29	Flat washer, 1/2" I.D.	1
28	Bushing 7/16"	1
26	Hex lock nut, 1/2" - 13	1