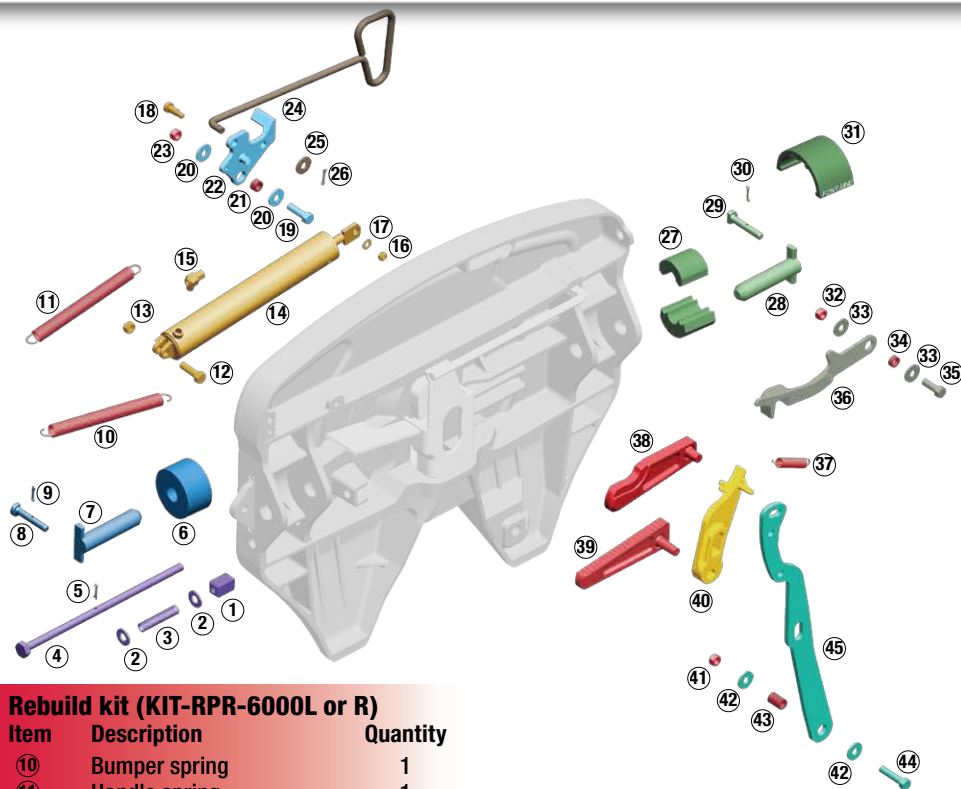


6000/7000/7000CC series No-Slack® top plate kits



Rebuild kit (KIT-RPR-6000L or R)

Item	Description	Quantity
10	Bumper spring	1
11	Handle spring	1
37	Timer spring	1
38	Step jaw	1
39	Wedge	1
21	Bushing, 7/16"	1
34	Bushing, 5/16"	1
43	Bushing, 1 1/4"	1
23, 32, 41	Hex lock nut, 1/2" - 13	3

Wedge-stop rod kit (KIT-ROD-1108)

1	Wedge-stop rod nut	1
2	Flat washer, 5/8" I.D.	2
3	Wedge-stop rod spring	1
4	Wedge-stop rod	1
5	Cotter pin, 3/16" x 1"	1

Bracket pin kit (KIT-PIN-191)

6	1-piece bushing	2
7	Bracket pin	2
8	Bracket retainer pin	2
9	Cotter pin	2

Bracket pin kit (KIT-PIN-LLB)

27	2-piece bushing	2 Pairs
28	Bracket pin	2
29	Bracket retainer pin	2
30	Cotter pin	2
31	Bracket liner	2

Secondary lock kit (KIT-LAT-6000L or R)

11	Handle spring	1
19	Hex head bolt, 1/2" - 13	1
20	Flat washer, 1/2" I.D.	2
21	Bushing, 7/16"	1
22	Secondary lock	1
23	Hex lock nut, 1/2" - 13	1
26	Cotter pin, 3/16" x 1"	1

Spring kit (KIT-SPRING)

Item	Description	Quantity
10	Bumper spring	1
11	Handle spring	1
37	Timer spring	1

Bumper kit (KIT-BPR-6000L or R)

32	Hex lock nut, 1/2" - 13	1
33	Flat washer, 1/2" I.D.	2
34	Bushing	1
35	Hex head bolt, 1/2" - 13	1
36	Bumper	1
10	Bumper spring	1

Timer kit (KIT-TMR-6000L or R)

37	Timer spring	1
40	Timer	1
41	Hex lock nut, 1/2" - 13	1
	Hair pin cotter (not pictured)	1

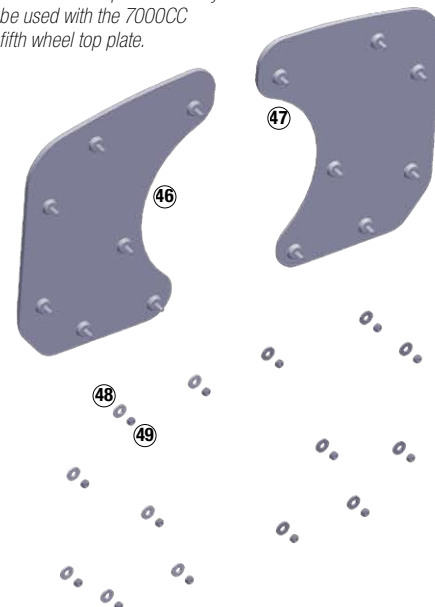
Operating handle kit (KIT-OPR-6000)

21	Bushing, 7/16"	1
34	Bushing, 5/16"	1
43	Bushing, 1 1/4"	1
23, 32, 41	Hex lock nut, 1/2" - 13	3
42	Flat washer, 1/2" I.D.	2
44	Hex head bolt, 1/2" - 13	1
45	Operating handle	1
	Hair pin cotter (not pictured)	1

Pull handle kit (KIT-PUL-6000L or R)

24	Pull handle	1
25	Flat washer, 1/2" I.D.	1
26	Cotter pin, 3/16" x 1"	1

Clean Connect plates can only be used with the 7000CC fifth wheel top plate.



Clean Connect plate kits

These kits can only be used with the 7000CC Clean Connect fifth wheel top plate.

Item	Description	Quantity
(CC-PLATES)		
46	Right CC plate	1
47	Left CC plate	1
48	Flat washer	14
49	Hex lock nut	14
(CC-PLATES-R)		
46	Right CC plate	1
48	Flat washer	7
49	Hex lock nut	7
(CC-PLATES-L)		
47	Left CC plate	1
48	Flat washer	7
49	Hex lock nut	7

Air actuated kit (KIT-AA-6000L or R)

This kit includes the parts mounted to the fifth wheel. If you are upgrading from manual to air actuated you will also need KIT-AIR-DASH which includes the parts required to complete the in-dash installation.

Item	Description	Quantity
12	Hex head bolt	1
13	Hex lock nut	1
14	Air cylinder	1
15	Mini-matic jumbo exhaust valve	1
16	Hex lock nut	1
17	Flat washer	1
18	Shoulder bolt	1

KIT-AIR-DASH

